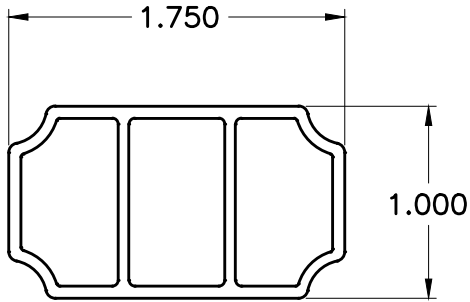




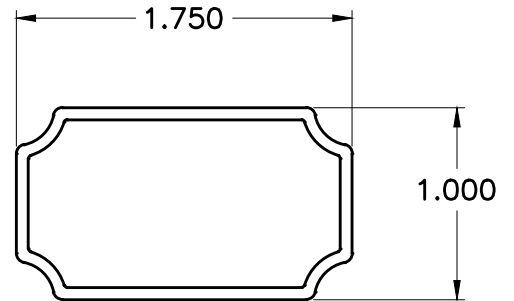
**9083**



1.75 x 1.0 x .063w  
trippel hollow

WT/FT: .480

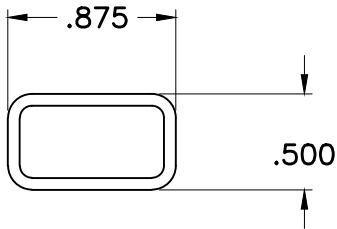
**6348**



1.75 x 1.0  
HOLLOW TUBE

WT/FT: .365

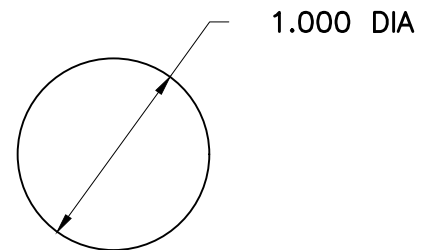
**8204**



.875 x .5 X .062W TUBE

WT/FT: .174

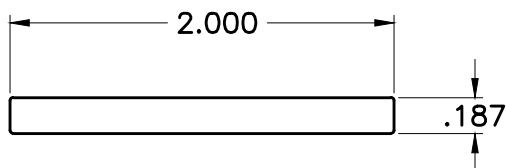
**8093**



1" Ø BAR

WT/FT: .942

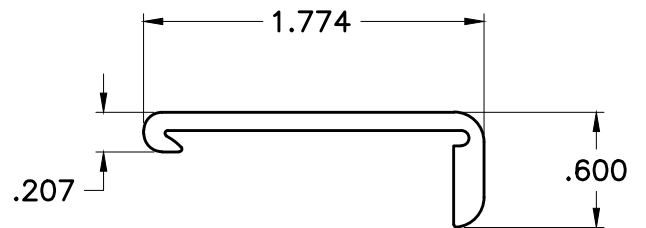
**8736**



2 X 3/16 FLAT BAR

WT/FT: .449

**8895**



1.77 x .60  
FURNITURE END

WT/FT: .295