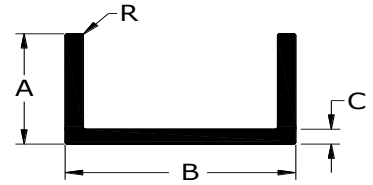




**Flextrude**  
ALUMINUM SHAPES



## Architectural Channel

DIE NUMBER	DESCRIPTION	A	B	C	R	LB/FT
8024	1 1/2 X 1/2 X 1/8 AR CHNL	0.5	1.5	0.125	0.016	0.337
8734	1 1/2 X 3/4 X .125W CHANNEL	0.75	1.5	0.125	0.016	0.413
3085	N/A	0.75	1.788	0.04	0.016	0.154
8755	1.0 X 1.062 X .25W POST CHANNEL	1	1.062	0.25	.015/.060	0.916
8707	1-1/2 X 1 X .125W CHANNEL	1	1.5	0.125	0.016	0.487
8027	1 3/4 X 1 X 1/8 AR CHANNEL	1	1.75	0.125	0.016	0.524
8391	2 X 1 X .125W CHANNEL	1	2	0.125	0.016	0.562
8328	1 X 2 X .050W REC CHANNEL	1	2.14	0.05	0.05	0.241
6595	1 X 3 X .125 CHANNEL	1	3	0.125	0.016	0.712
8843	1 1/2 X 1 1/2 X .125W CHANNEL	1.5	1.5	0.125	0.016	0.637
8788	1.5 X 2.115 X .045W CHANNEL	1.5	2.115	0.045	0.016	0.27
1065	2.14 X 1.5 CHANNEL EQUAL LEGS	1.5	2.14	0.05	0.016	0.3
8380	1 1/2 X 3 1/8 X .055W REC CHANNEL	1.5	3.125	0.055	0.016	0.395
8280	1 1/2 X 4 X .063W CHANNEL	1.5	4.125	0.063	0.016	0.524
8924	1 3/4 X 1 3/4 CHANNEL (ARMOUR GATES)	1.75	1.75	0.125/.093	0.016	0.625
8902	2 X 2 X .125W CHANNEL	2	2	0.125	0.016	0.863
8618	2.375 X 2.312 X .125 SNAP CHANNEL	2.375	2.312	0.125	0.016	1.006
3663	90 U-BRACKET / CHANNEL	2.5	1.76	0.22	0.016	1.668